

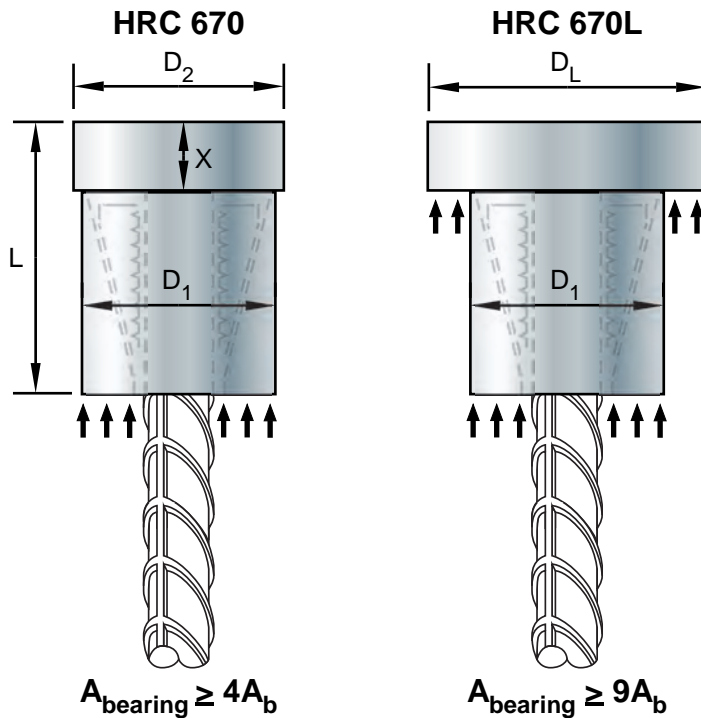
Introducing HRC 670 Series T-Head





HRC 670 Series T-Head

When standard hooks or headed bars cannot be prefabricated :



Full rebar strength and ductility is consistently developed by pushing the HRC 670 onto the end of the bar. The torque bolt ensures that the bar is fully gripped and wedged for a tight ultimate connection with the bearing area:



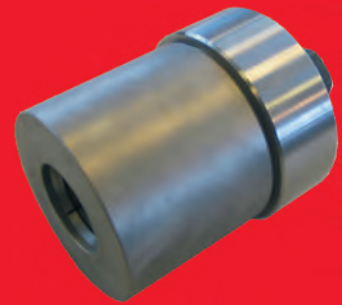
Bar Size	A706/A615* Grade 60		A615/A706* Grade 80		D ₁	D ₂	D _L	L	X
	min yield	min tensile*	min yield	min tensile*					
#5	18,600	24,800	24,800	31,000	1.5	1.75	2.0	2.0	0.5
#6	26,400	35,200	35,200	44,000	1.75	1.875	2.5	2.313	0.5
#7	36,000	48,000	48,000	60,000	2.0	2.25	2.875	2.75	0.625
#8	47,400	63,200	63,200	79,000	2.375	2.5	3.25	3.125	0.625
#9	60,000	80,000	80,000	100,000	2.625	2.75	3.625	3.375	0.75
#10	76,200	101,600	101,600	127,000	3.0	3.25	4.0	3.5	0.875
#11	93,600	124,800	124,800	156,000	3.5	3.5	4.5	4.0	1.0
#14	135,000	180,000	180,000	225,000	Coming Soon!				

All data subject to change without notice.
 * The lower min tensile strength of the 2 specs shown (A706).

Patent No.: US 9,091,064 B1

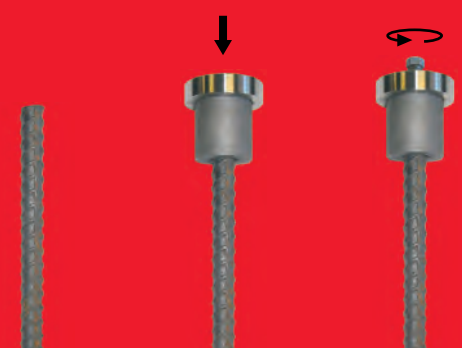


Headed Reinforcement Corp.
 11200 Condor Ave. Fountain Valley, CA 92708
 714-557-1455 714-557-4460 fax



Field Install T-Heads Are As Simple As:

1 - 2 - 3



No Special Equipment Needed

- Cut bar to desired elevation - X (1)
- Push HRC 670 onto bar until it bottoms out (2)
- Torque bolt until head breaks off (3)

Typical Applications:

- Elevation and Other Field Fixes
- Pile Anchorage
- Retrofit
- Fabricated Material Shortages

(800) HRC-6775
www.hrc-usa.com



Made in the USA

